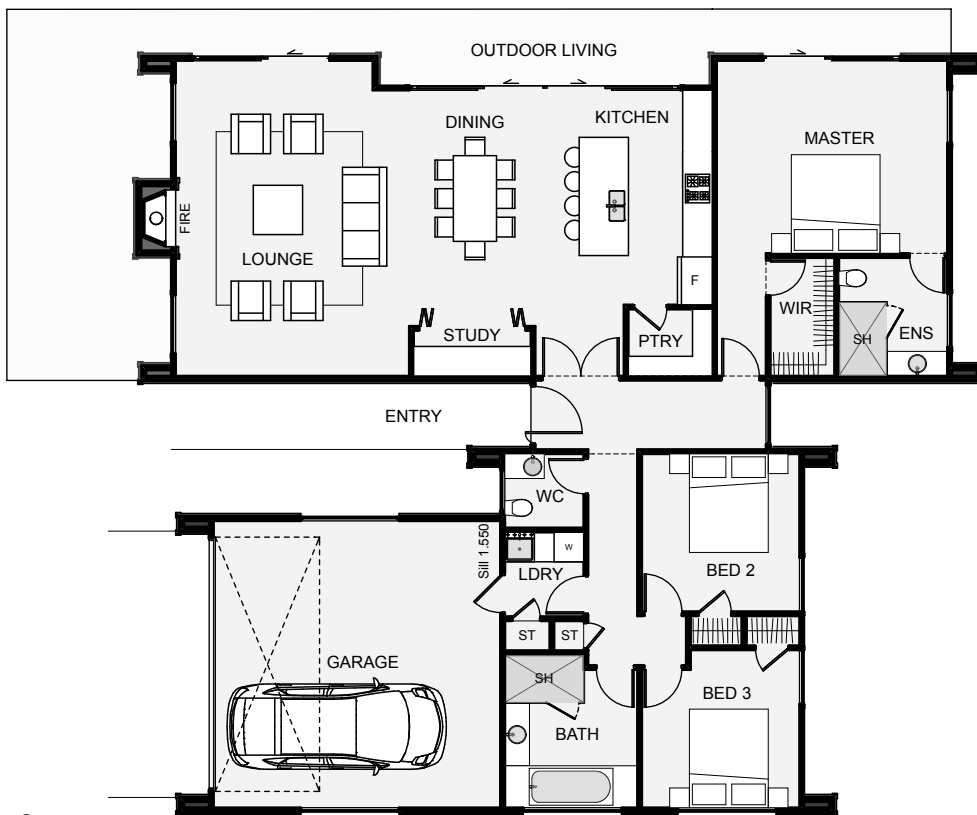




The Luna is a standout architectural home, especially with its use of cladding. The timber is positioned in the voids just like the flesh of a fruit when cut, while the metal wraps around the exterior like an organic skin. The shape of the home however, is very abstract. The layout is comprised of two wings with bedrooms on each end, this is to give the bedrooms great morning sun coverage. The lounge and living are positioned to make the most of sunlight right throughout the day.



Floor Area: 190m²

2
 3
 2
 17.1m
 15.3m

Contact Eves Construction Ltd.
 Rowan 021 979 092 | Ryan 021 979 771
 Email evesconstruction@xtra.co.nz

